



The Lutheran Beacon

Let your light shine . . .



WWW.SELC.LCMS.ORG

Published by the SELC District of the Lutheran Church - Missouri Synod MARCH 2013

Deadlines Loom for LWML National Convention

submitted by Laura Bergmann, President SELC District LWML

The LWML National Convention will be held in Pittsburgh from Thursday, June 27 through Sunday, June 30, 2013. This is an experience not to be missed. The theme of the Convention is **Quenched! By the Waters**, based on John 4:14, "...whoever drinks the water I give him will never thirst. Indeed, the water I give him will become in him a spring of water welling up to eternal life." Our SELC District, as one of the six Host Districts for the Convention, is working hard to make this gathering a big success. Local societies are busy making beaded bookmarks and quilts for the event. Still more bookmarks are needed. If you and/or your society are not yet making bookmarks, please fill out a Call for Workers form and write "bookmarks" on it, and the number you wish to make. Send this form to Honey Pabst, and she will forward it to Barb Giger who is in charge of favors. Barb will acknowledge your offer and will send you the beaded bookmark instructions.

Ardyne Kirn and Betty Cervantes are busy making our District banner which will be used during the Banner Procession on Friday morning at the Convention. All District banners will be on display in the Convention Hall.

To date, 32 SELC workers have officially volunteered to help at our National Convention. These include Don Roegge, Berta

Fabrici, Rich Fabrici, Cheryl Rusiecki, Susan Dzurovcik, Leah Socrates, Kathy Vollrath, Cathy Friedman, Lois Ballas, Dianne Krueger, Nona Schipull, Ardyne Kirn, Betty Cervantes, Sharron Schademann, Courtney Jacob, Rose Soffa, Martha Moyer, Dale Moyer, Karen Kowalczyk, Patricia Hageman, Linda Liston, and Miriam Wilms. Sharon Roegge is serving as the Prayer Chairman, and Verna Jurkovich has been placed as Director of the Prayer Chapel. Laura Bergmann is serving on the Host Committee, and Milly Kwiatkowski will be the Director of Exhibits. Six pastors in the SELC District, including the Rev. Dr. Carl Krueger, the Rev. Dr. Kevin Bergmann, Rev. Kenneth Ballas, Rev. Luke Jacob, Rev. Andrew Dzurovcik and Rev. Kevin McLeod, have volunteered to help. Pastors are needed to help distribute Communion to more than 4,000 people at the Opening Service on Thursday evening, June 27. If you have not yet officially signed up to volunteer to work at the Convention, it's not too late. **The deadline to register to volunteer has been extended to March 15th.** Please fill out a Call for Workers form, and email, fax, or mail it to Honey Pabst at the address listed on the form. Call For Workers forms can be obtained online at the LWML page of the SELC District Website, www.selc.lcms.org, or

from Zone Presidents. Volunteers will receive a \$65.00 discount coupon to be deducted from their \$180.00 registration fee. Volunteers should not register until they receive their discount coupon.

Those people who wish to attend the Convention, but are not volunteering to work at the Convention, must sign up by March 14, 2013, to get the \$180.00 early registration fee. After that date, the regular registration fee will be \$200.00. Late registration fee begins on May 10, 2013, and will be \$225.00. Don't forget to make your hotel reservations with LWML at the same time.

Every attendee must sign an Acknowledgement and Release Form. This form should be sent in with your registration materials. If you have already registered, please send this form in separately to the Registrar.

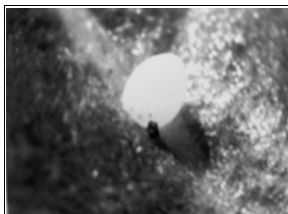
If you are interested in riding a District bus to the Convention, please contact District President Laura Bergmann, or one of the Zone Presidents. There are still a few seats left on the Northern Illinois District bus, the Indiana District bus, and the New Jersey District bus. The Ohio District bus has been cancelled.

[continued on Page 7]

THE BUTTERFLY SYMBOL OF THE RESURRECTION

by Rev. Thomas Soltis

LIFE CYCLE OF A BUTTERFLY



1.
Butterfly Egg

Human Life in Womb

2.
Caterpillar

**Human Life
on Earth**



3.
Chrysalis

Death & the Grave

4.
Butterfly Emerging

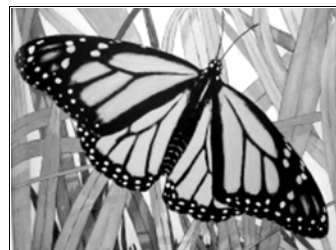
**Resurrection
from the Dead**



*"He was delivered over to death for our sins
and was raised to life for our justification."
(Rom.4:25)*

*Those who believe in Christ will be raised from
the dead to receive eternal life. (John 6:40)*

*"So will it be with the resurrection of the dead.
The body that is sown is perishable, it is raised
imperishable; it is sown in dishonor, it is raised
in glory; it is sown in weakness, it is raised in
power; it is sown a natural body, it is raised a
spiritual body." (1 Cor. 15:42-44)*



A religious symbol is a representation of sacred significance. Christian symbols date back to early times when the majority of ordinary people could not read or write and printing was unknown. Some Christian symbols were borrowed from earlier non-Christian religions. For example, the ancient Egyptians saw a similarity between the wrapping of mummies and the cocoon-like chrysalis of a butterfly. Both Egyptians and Greeks placed golden butterflies in their tombs as symbols of resurrection and immortality. Christians at times adapted symbols from other religions and gave them Christian meaning. The butterfly became a symbol of the resurrection of Christians to eternal life through the redemption of Christ. Human comparisons were made to the four stages in the life cycle of a butterfly.

RESURRECTION BUTTERFLY BUSH

Artwork by Rev. Thomas Soltis

Antique brass butterflies were purchased. A brass container was pierced with the word "resurrection" and filled with concrete. Eighteen different semi-precious stones were placed half way into the wet cement to represent emerging resurrected Christians. A gold cross was placed atop a brass bar to which the butterflies were attached. The brass bush is 3 feet tall.



**CHRISTIAN STEWARDS TAKE CARE
OF THINGS WITH ONE FOOT ON EARTH
AND THE OTHER IN HEAVEN.**

SELC Board of Directors Adopts Balanced Budget for 2013

by Rev. Dr. Carl Krueger, President SELC District

For more than 20 years, the SELC District has accepted a "deficit" budget, planning to spend more than would be received from the District Congregations. A substantial financial reserve made this practice possible, as the District Board of Directors and the SELC District Conventions decided to spend down our reserves and invest them into mission opportunities. By God's Grace, these reserves did what they were meant to do, and we have provided seed money for mission starts and supported many on-going outreach endeavors.

The substantial reserves are gone. The SELC District has now the equivalent of approximately one year's historic expenses -- a level that is the minimum if the District is to meet our monthly financial responsibilities. Therefore, the District Board of Directors has called a halt to any "deficit spending plan" and has set 2013 to establish a balanced budget spending plan.

To accomplish this task, a number of difficult decisions needed to be made. The "initial 2013 Budget" based on specific requests and the projected costs from the District Convention workplan totaled \$752,646. Stewardship Chairman, Rev. Thomas Soltis, projected that the District would only receive approximately \$520,000 from the SELC Congregations. A most significant gap!

The Board of Directors realized that the major planned expenses would need to be cut. And that is what the Board did.

The largest expenditure was what District remits to Synod, in support of all the Synod's programs. \$210,000 was scheduled. The Board cut this to \$143,000 - a 30% reduction; however, by SELC District Convention resolution, the District is to take 10% of whatever it plans to send to Synod, and instead, send this amount directly to the two Seminaries in equal amounts. Therefore, for 2013, Synod will receive \$130,000 from the SELC, with each Seminary receiving \$6,500 "undesignated" receipts, thereby cutting Synod by \$80,000, a near 40% reduction.

The next largest scheduled expenditure for District is the support provided to the Lutheran Haven for "charitable support for nursing home residents". The planned \$64,000 expenditure was trimmed to \$48,000, a 25% reduction.

The next two largest scheduled expenditures were the District's share of support for the District /Lutheran Haven Gift Planner, and the stipend provided for the Office of the District President. Both of these planned expenditures received a 50% cut. The Board noted that cutting the Gift Planner support will probably diminish the Gift Planner's availability to SELC Congregations, and cutting the budget for the Office of the District President will not provide enough money to provide a Congregation with a Vicar, as has been the historic practice of the SELC.

The Board of Directors cut the planned yearly stipends for the Mission Executive, the Financial Secretary, the Treasurer, the District Secretary and Webmaster by approximately 10%.

The above cuts allowed the Board to make minimal cuts in the support of SELC District Missions, SELC student aid assistance grants, and SELC District Programs (such as the LWML, the Luther League, the Beacon, and Evangelism grants).

The Board's action cut approximately \$166,000 from the planned expenditures, and when taking into consideration adjustments to the budget from LCEF resources and LCMS Convention assessments, the final result is a nearly balanced budget for 2013.

All SELC Congregations are asked to review their own stewardship practices, and each one's commitment to the support of District and Synod, our Missions and Programs. Also, each Congregation is encourage to send in monthly remittances to our SELC Financial Secretary, Mr. Larry Schultz, 1566 Bushkill Center Rd, Bath, PA, 18014.

Resurrection Lutheran Church - Crown Point, IN

Celebrates 21st Anniversary

by Ardyne Kim

The twenty-first year of growing in faith that we shine for Christ and proclaim His everlasting love was celebrated during our worship service on Feb. 10, 2013. The service of worship and thanksgiving was enriched by the Senior Handbell Choir of Trinity, Hobart, IN, organist Lynn Praschak, Cantor Daniel Nieman, and Rev. Robert Breitbarth. Rev. Breitbarth spoke of the years of "Our Blessing from God" that is Resurrection LC, the responsibilities of continued growth in the study of His Word and sharing God's love not only among ourselves but with everyone we encounter. At the conclusion of the service the Handbell Choir performed three additional selections for the enjoyment of the congregation.



A delicious brunch prepared by the women of the congregation was enjoyed by guests and members. A pictorial history of the congregation from groundbreaking, construction, first worship service in the completed sanctuary, through worship and activities under 3 pastors and vacancy pastors who have served Resurrection was presented in the church basement.



Briefly in review, the first worship service of the SELC Mission Congregation Resurrection and constitutional ratification meeting was held at John Wood Elementary School in Merrillville, IN, approximately 1



mile from the site of the church construction site, on Feb. 9, 1992. The State of Indiana granted incorporation as a not-for-profit religious entity on Feb. 14, 1992. Groundbreaking Services were held on Sept. 2, 1990 led by Rev. Carl H Krueger Jr., Mission Board Chairman; Rev. Luther J. Bajus, Second Vice President of the SELC Distreict; and Rev. Kevin Bergmann. Construction of the church began in late July, 1991 with support of the Mission Board and the gift of all church furnishings, communionware, paraments and stained glass windows, as well as the income from the sale of the SELC congregation Dr. Martin Luther - Gary, IN.



Rev. John A. Jameson was installed as missionary-at-large to the Merrillville-Crown Point area on March 8, 1992 and the congregation continued to hold worship services and Sunday School at John Wood School and Lenten mid-week services at the parsonage until an occupancy permit was issued for the church building. The first worship service at Resurrection was joyously held on Sept. 20, 1992 and the dedication of Resurrection was led by Rev. Carl H. Krueger Jr., Preacher, Rev. Luther J. Bajus, Dedicator, Rev. John A. Jameson, Liturgist, and Mr. David Schoon, Guest Organist, on Nov. 15, 1992. At the June 23 - 26, 1994 10th Regular Convention of the SELC District, The Lutheran Church-Missouri Synod, at Clark, N.J., Resurrection was

received as an official congregation off the SELC District LC-MS. Resurrection remained a Mission Congregation of the SELC District for 10 years and has been served by 3 pastors: Rev. John A Jameson - Mar. 8, 1992 - Jan. 12, 1997; Rev. Chris Bottorff - Mar. 8, 1998 - May 8, 1999; and Rev. Robert Breitbarth - April 30, 1998 - Present.

Thirteen of the 79 founding members of Resurrection were present at this joyous event and we note that 25 of the founding members have been called to their eternal home with our Triune God.

***Rejoice and pray with us that Resurrection will continue in mission
to share the Gospel and grow in grace in the fields where God has planted us.***

A Word or Two about Those Imprecatory Psalm Passages

by Pastor K. M. Ballas, Em

Has this ever happened to you? You are prayerfully reading a beautiful psalm (Psalm 34, 104 or 139 are three that come to mind) when suddenly you are confronted with a verse or two in which the writer suddenly breaks into an un-Christian like “rant” against his enemies prompting you perhaps to wonder why these so-called imprecatory statements are part of our Holy Bible. If you are not sure that Christians, too, ever have enemies or may at times even be enemies of one another, reread such familiar passages of Psalm 23:5, Matthew 5:45 or our Lord's Prayer in Matthew 6:9ff.

Fortunately, this is not all that the Bible has to tell us. Samuel Terrien in his *The Psalms and Their Meaning for Today* properly suggests that there may be limitations in the way we are to consider these occasional admittedly jarring outbursts. Apart from the wider context of the Scriptures as a whole, it would surely be considered a mark of insanity to connect a statement like “Cain killed Abel” in Genesis 4 to our Lord's words at the conclusion of His Parable of the Good Samaritan in Luke 10, namely, “Go and do likewise!” Failure to interpret less clear passages in light of those that are un- mistakably clear (like John 3:16f.) is fraught with peril both to ourselves as well as to those around us.

2 Timothy 3:16 says all Scripture (including the Old Testament) is “profitable” for Christ's Church. How, then, are we as God's people to apply to our daily lives passages that easily seem to sound less-than-Christian in even asking the Lord to punish the wicked enemies of “the righteous”?

Though we believe that what they wrote was indeed divinely inspired, when human writers themselves (including Israel's King David) speak of “the righteous,” they cannot possibly be describing people who could be considered models of living a completely sanctified life of holiness. Without denying that Scripture also uses “just” or “righteous” in a forensic sense of declaring us sinners saved or forgiven by our merciful God, this side of heaven, as far as our living the Christian life is concerned, there are no absolutely perfect Christians (or perfect congregations!) – only a perfect Lord!

Regarding those disturbing imprecatory psalm passages, therefore, St. Paul's words in his Epistle to the Ephesians likely come to mind, namely, “Be angry, but do not sin!” (Ephesians 4:26). Scripture does not expect us to be totally devoid of emotion. At the same time, recalling that the culminating manifestation of “the fruit of the Spirit” is self-control, at no point are we told that we must “act out” on our very real oft-times negative feelings but allow instead that Another, our Brother-Savior Jesus Christ, fight our battles for us as, ultimately, everything—our sanctification as well as our justification -- depends on Jesus and Him alone! See Romans 12, Galatians 5 and Philippians 4.

During yet another blessed Lenten season in which we anticipate the reality of God's promised never-ending Easter, consider these biblical words from the pen of the Lord's inconsistent yet forgiven apostle Peter who, writing to baptized believing Christians like ourselves, makes no fewer than six references to the 53rd chapter of Isaiah:

For to this you have been called, because Christ also suffered for you, leaving you an example, that you should follow in His footsteps. He [alone] committed no sin; no guile was found on His lips. When He was reviled [or bullied], He did not revile in return; when He suffered He did not threaten; but He entrusted Himself to Him who judges justly. He Himself bore our sins in His body on the tree that we might die to sin and live to righteousness. By His bloody wounds you have been healed. For you [also] were straying like sheep, but have now been returned [by God] to the Shepherd and Overseer of your souls (1 Peter 2:21-25; note also Romans 6).

GRACE LUTHERAN HOLDS TENTH ANNIVERSARY SERVICE

by Rev. George R. Hansell, Jr.

February 10th was an exciting day for the members of Grace Lutheran Church of Lakewood, Ohio as they gathered together for worship to celebrate ten years of God's grace as a congregation. The Rev. Dr. Carl Krueger was the guest speaker for the occasion, preaching on the congregation's theme of "More Grace to Come," based on the Scripture recorded in James 4:4. Using also a text from 1 John 4:4, Dr. Krueger noted that the people of God today and their congregations struggle with the same kinds of challenges and sins that the first century Church experienced, yet the power of God was and always will be sufficient for Christians to be the people of God, the Church of God, one day at a time, and thereby fulfill the purpose for which God has placed them as individuals and as a congregation in the world.

The service featured a contemporary song written for the 10th Anniversary by Mr. Randy Gega, a charter member of Grace who had formerly belonged to Pentecost, a congregation that along with Saints Peter & Paul Lutheran Church joined together on January 1, 2003 to form Grace. The Sunday School Children joined with the Adult Choir for a special anthem that included a small bell ensemble. Pastor Hansell also offered a solo entitled Amazing Grace (My Chains Are Gone) by contemporary Christian songwriter Chris Tomlin. During the service, the children and members of the congregation reflected on the things that they are thankful for, something which they had been doing the previous four weeks using the letters that spell G-R-A-C-E. On this occasion, the congregation had to come up with things that they were thankful for that begin with the letter "e", the last letter in the word G-R-A-C-E.



Choose your chili!!



P. Krueger greets Florence Folta, Carol Olsen & Anne Pavlik

The congregation concluded the festivities for the day by joining together for a Chili Luncheon in the church's basement. The Elders of the congregation as well as other members provided chili selections that ranged from mild to very spicy. Good fellowship and good fun was had by all.

The congregation will be celebrating their tenth anniversary with activities throughout the year. In January, the congregation held a servant event in which they prepared 120 box lunches for a homeless ministry in Cleveland. In March, the congregation will do a "Meals on Wheels" event for elderly in the congregation and for folks who might benefit in the community that are known by members of the congregation. In April, the congregation will celebrate the 5th Anniversary of its preschool ministry. Grace will share its joy with the district through the Beacon as more activities are planned through the year.



Pastors: Ken Ballas, Carl Krueger, George Hansell & Donald Hayas



P. George Hansell & Krista, P. Carl Krueger, Mrs. Ruth Janosek, Lois & P. Ken Ballas, P. Donald Hayas

To God be the glory for ten years of God's rich grace toward God's people in Lakewood. May His power be sufficient for each new day as we anticipate "More Grace to Come."

The second LWML **Golf Outing** will be held in Pittsburgh at the Hickory Heights Golf Club on Wednesday, June 26, 2013. Tee off time is 8:00 a.m. The SELC District is proudly sponsoring a hole at the Golf Outing. For more information, see the Winter Quarterly, or contact any of the Zone Presidents.

Servant Activities will be held at the Convention on Thursday, June 27, 2013, between 9:00 a.m. and 3:00 p.m. Please see your registration information for more details.

Meals at the Convention should be purchased at the time of registration. There is a list of these meals in the Convention Insert in the Winter Edition of the Quarterly. Meal locations have not yet been determined, but a list of meal locations will be in the first Convention newspaper. Please read this newspaper thoroughly when you first arrive at the Convention.

The Pledge Walk will take place at a new time this year. Instead of in the early morning, it will take place on Friday, June 28, 2013, from 5:00-6:00 p.m., along the river trail in downtown Pittsburgh. Walkers will be able to choose the distance covered, with most people walking between half mile and a mile. Please bring your pledge form along with your pledges to the check in table. Each walker will receive a Pledge Walk t-shirt. Walkers should dress casually for this event. The dinners that follow the walk-a-thon will be casual, so there will be no need to change from your walking attire. The Block Party that follows will also be casual.

Each District will have a **District Caucus** (or meeting) at the Convention. It is very important that all SELC volunteers and attendees attend this meeting.

Convention photos by District will be taken either right before or right after the District Caucus. Please look at your first Convention newspaper to find out the date and time for your Caucus and Convention photo. Please pre order your photo so that you will be able to pick it up at the Convention.

No Convention tote bags will be handed out at the Convention this year. This decision saves the LWML \$10,000.00. Those with tote bags from prior conventions should bring one to use, and one to give to someone else. The Young Women Representatives will be getting special tote bags.

Convention attendees are urged to bring **Gifts From the Heart**. These are listed in the registration materials. These gifts will be given to local Pittsburgh agencies that have been chosen by an LWML screening committee. These agencies include The Haven, a women and children's shelter; a 28 bed pediatric hospital; The Sunshine Ministries, a pro life group; and Light of Life, an agency supplying food for the homeless. Convention attendees may bring unlimited numbers of these donations. They should be in assembled and labeled bags. **Volunteers will be needed** to collect, count, and box items.

There will be a **block party** on Friday night at the Convention from 7:00 to 9:00 p.m. It will be free, family oriented, and interactive.

There will be a **Delegate Orientation** at 3:00 p.m. on Thursday. At this time, the SELC Delegation will find out where it will be sitting. Delegates will have an opportunity to see the candidates, and ask questions about bylaw changes.

Each District President is being allowed to pick one "**Unsung Hero of the LWML**" from her District. If you know of someone who has worked hard for the LWML, but has been unrecognized, please email your suggestion to Laura Bergmann. The Unsung Hero from each District will walk in the Saturday processional. She will be announced at the District Caucus.

Societies and individuals are urged to **send in their mites** before March 20, 2013, so they can be credited to the 2011-2013 biennium. The National mite goal is \$1,825,000.00. Approximately \$230,000.00 is needed. Please pray that the LWML may be able to reach its mite goal!

The LWML has prepared a 0This Blessing should be done at a regular Worship Service the week or so before Convention volunteers and attendees travel to Pittsburgh. SELC LWML District President Laura Bergmann will email this Blessing to the congregations soon.

Just remember, it's God's Convention. He will make everything work out so that we who attend can be **Quenched by the Waters!**





WE NEED YOU

**... our feet to go
on His errands...
remember our LWML
Pledge?**



**...our hands to work
for Him... remember our
LWML Pledge?**



**...our voices to sing His
praises...**

**..our lips to proclaim His
redeeming love...**

remember our LWML Pledge?

**PITTSBURGH 2013 LWML CONVENTION
June 27-30, 2013 - Pittsburgh, PA**

WE NEED WORKERS TO MAKE THIS CONVENTION A SUCCESS
Remember, We are the Hosts. We need you! What a joy to Serve!

Contact person: Honey Pabst - (631) 589-8353 email: hunny.pabst@yahoo.com

With the coming of the 2013 Pittsburgh LWML Convention, also comes the end of national's biennium. In order to fund as much as possible of the nineteen selected grants, please send in your mites to me to arrive by **March 20th** so I can then be sure their twenty-five percent arrives in time.

Thank you, Sharon Roegge, SELC District LWML Treasurer

Daunting Challenge — Wonderful Opportunity!

by Robin Paris, Gift Planning Counselor - Lutheran Haven Foundation & the SELC District

The SELC District has experienced a dramatic increase in the number of people from our churches preparing at our Concordias for full-time church work. Last year, we had four individuals; this year we have thirteen!

Because of its mission and outreach focus, the District has always given support to these future church workers as they complete their education. But this dramatic increase has created a budgetary challenge. The amount designated in our budget simply won't allow the District Student Welfare Board, led by Pastor John Telloni, to give scholarships in any kind of significant or effective amount to these thirteen—the very future of our church!

With permission from President Krueger, I am writing this article to raise up to God's people in the SELC District this Challenge/Opportunity. We pray that God will stir the hearts of his people and supply the necessary gifts to allow the District to support these students with appropriate scholarships.

The following are this year's recipients:

Institution attending	Name of Student	Home Congregation
Concordia Univ. Nebraska	Natalie Lehenbauer	St. Luke's, Oviedo FL
Concordia Univ. Nebraska	Annalisa Condamine	St. Luke's, Oviedo FL
Concordia Univ. Chicago	Teresa Graham	Dr. Martin Luther, Chicago
Concordia Univ. Ann Arbor	Elizabeth Haentflying	Concordia, Youngstown
Concordia, Bronxville NY	Nicholas Gonzolez	Redeemer, Manchester NJ
Concordia, Bronxville NY	Robert Ricard	Hope, Melbourne FL
Concordia Seminary, St. Louis	Chris Johnson	Holy Cross, Lake Mary
Concordia Seminary, St. Louis	Jacob Hoyer	Holy Cross, Lake Mary
Concordia Seminary, St. Louis	Kurt Steinbrueck	Family of Christ, Tampa
Concordia Seminary, St. Louis	Bill Whitehead(Vicar)	Family of Christ, Tampa
Concordia Seminary, St. Louis	Brett Hartwig	Concordia, Bethlehem, PA
Concordia Seminary, Ft. Wayne	Chunlin Hu	Ascension, Montreal, Canada
Concordia Seminary, St. Catherine's	Milton Lam	Ascension, Montreal, Canada

If the Lord stirs your heart to assist with this challenge, make your checks out to "SELC District", and write "Church Worker Scholarships" in the Memo. Mail to:

Larry Schultz (SELC Dist. Fin. Sec'y)
1566 Bushkill Center Road
Bath, PA 18014

Thank you in advance for your generous response.
Robin Paris, CDE, Gift Planning Counselor
rparis@lutheranhaven.org; 407-706-1168

DID YOU KNOW THAT LUTHER WAS 5 FEET SIX AND ONE-HALF INCHES TALL?

by Rev. Ron Meyer

At least, that is what I say. By a stroke of coincidence that is EXACTLY my same height. How do I know? Look it up on the internet. . . . yahooanswers.com. I looked in Roland Baiton and it wasn't there; Schweibert didn't have a thing about it; even the Book of Concord doesn't mention this important fact. Thus, I took it upon myself to make up this little-known tidbit . . . and with the help of our internet-savvy DCE, manipulated Yahoo Answers to make it so. If you say it often enough, it must be so. Interesting how we make up facts. I heard a neat saying a few months ago; **72.8% of all statistics are made up on the spot.** Think about that and it has a grain of truth to it. If we say it enough to ourselves, then it must be true. Science has been doing this long before Darwin. The society which we live in has become expert in this field without even knowing it. We say privacy is so important that it trumps the life of the unborn. We repeat the mantra about the 2nd Amendment to the point that we actually believe American citizens have a God-given right to an Uzi fully-automatic gun. We repeat the phrases about "born that way" until we actually convince ourselves that unnatural acts are somehow something to be celebrated and "affirmed."

"Did God really say. . ." is the way the "Master-Fact-Manipulator" Satan began his assault on the Word. And Eve repeated things to herself and Adam long enough that they began believing what they were saying. The church has no corner on this market, but we participate in the same charade. We somehow convince ourselves that the Bible clearly allows us to exclude pretty much everyone except Missouri Synod Lutherans from God's Table. We keep repeating over and over to ourselves how we need to be careful about offending our "brothers and sisters in Christ" and so are justified in offending an entire nation grieving the tragedy of children gunned down in school. We pride ourselves on purity of doctrine as much more important than really ministering to people's needs -- and so convince ourselves that somehow being a mediocre church and a "small faithful remnant" is preferable to worrying about parking lot problems.

It was the little boy in the parable who finally shouted as the emperor went by [the one who had made up his own set of facts to the point of parading naked] *That man has no clothes . . . !*

That certainly is the way we are spiritually — feeling that we are fully clothed — convincing ourselves that the facts are on our side. Yet all along the facts are what Martin Luther stated as his final words: *We are beggars, that is true.*

*Nothing in my hand I bring; simply to the cross I cling!
Naked, come to thee for dress; helpless, look to thee for grace.
Foul, I to the fountain fly; wash me Savior or I die!*

This is your newsletter . . . Articles & Photos are welcome!

The Lutheran Beacon - Gail Peterson

email: gailpete37@yahoo.com

Please submit articles as separate attachments in the program you write in. [e.g. Word Perfect, Word, etc.], **NOT** as part of your e-mail.

Photos must be submitted as **separate attachments** [NOT as part of your article—.JPEG format preferred.] You *may* send multiple photos in one email.

DEADLINE FOR THE APRIL ISSUE IS MARCH 12TH

Check out the Beacon in full color on the SELC Website: www.selc.lcms.org

Update on your SELC District Partner Acts 1:8 Mission Society and the Northern Illinois District Partners.

by Pastor Randy Wilken

We have now begun not only to take our servant projects on the road, but our fundraising Indian Dinners as well. On Friday, Feb. 8th, we were getting ready for the first Acts 1:8 Indian Dinner (and servant Project) in Rockford Illinois. Our host congregation was Christ the Rock Lutheran Church. The conversation in the Rev. David and Jeanette Meggers' house went something like this:

Jeanette: *I'm just out of sorts today.*

Pastor David: *Me, too.*

Jeanette: *I love having guests, but I just almost feel...grumpy.*

David: *I feel that way, too, and I've sort of felt that way all week. But I think I know why. I think we are under spiritual attack. Satan doesn't want us looking forward to the dinner tonight. And he also has me feeling very selfish about all the time I'm going to be spending tomorrow with our service day.*

Jeanette: *I think you're right.*

She was right, and so was I. That evening, though, Chef Pradeep Gopalakrishnan (and company) prepared an absolutely delicious gourmet meal at our sister congregation, Redeemer Lutheran, in Rockford.

- Close to 100 people were in attendance
- 6 of our local churches were represented
- Youth from the Greater St. Louis and East St. Louis areas were present
- We got to hear testimonies from people whose lives are being impacted and who, in turn, are impacting the lives of others as the "hands and feet" of Jesus
- Commitments were made that will enable this ministry to grow

And after dinner and clean-up, with the next day's very full schedule hanging over us... this no longer (and far from) "grumpy" host couple stayed up until the wee hours of the night sharing some beverage and engaging in joyous conversation with our awesome house guests: Pradeep, his wife, Stacey, and their friend and co-volunteer, Mandy Kearns.

I awoke Saturday to fresh coffee, tired, but with a fresh attitude; an attitude of expectancy as to what God was going to accomplish this day. In the time I've spent with Acts 1:8, one of my biggest lessons has been that of patient expectation. As Pastor Randy likes to say, "Mission is messy." I agree. The "end-game" is unknown. Unexpected things happen amidst the planned things. And these are most often the "God-things"; the things, events, and relationships that we don't plan, but God brings about. Things like:

- Helping out a couple who have had multiple challenges over the last few years; health, unemployment, and resultant depression accompanied by a general sense of being so overwhelmed that they don't know where to begin. A portion of our group went to their house and went to work cleaning, shoveling their driveway, and loading up a bunch of stockpiled brush. At first, all this man could do was watch and point us to what he hoped we could do, but then we all witnessed hope take hold. He began to pitch in. He began to "do" things that he could easily have done without us. I believe that the difference was in the work of these young people as the "hands and feet" of Jesus. I believe that the difference was that we brought love without judgment and fostered hope.

[CONTINUED ON PAGE 12]

Hanging a suspended ceiling in a house that serves as home to recovering drug and alcohol addicts. One of the residents died just a week and a half before our workday. There was still a spirit of mourning, especially on the part of the house manager, Craig. I watched Craig's eyes light up with hope as we came to care in the name of Jesus.

- Debriefing with Pastor Randy (he and I exchange pulpits on these weekends—an added bonus for me since our daughter [a deaconess], son-in-law, and 5-month-old grandson, Jackson, live in south St. Louis) on the Monday after our weekend and hearing of one young participant who “doesn’t want to go back to where he’s been.” This conversation took place in the wee hours of Sunday morning, unplanned by us, but wholly a thing of God, crafted by the time we were together in work, in the Word, and in prayer.

I write these reflections as an encouragement to all who seek to connect others to Christ—especially those who are venturing outside their church walls to be the “hands and feet” of Jesus. I didn’t exactly know what I was getting into when I first met the Acts 1:8 Mission Society. I still don’t. But as long as it is of God and is about loving people in the name of Jesus, I’m ok with that. I kind of like messy.

Rev. David Meggers is the founding and current pastor at Christ the Rock Lutheran Church in Rockford, IL. His wife of 36½ years, Jeanette, is a realtor with Keller-Williams Realty. They love their family and church family, and enjoy boating whenever they get the chance. Jeanette bakes delicious bread and prefers a clean house. Pastor M. is... messy.

St. John's (Massillon OH) Shares Activities

by Colleen Pohlod



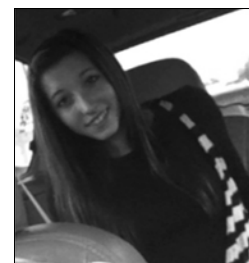
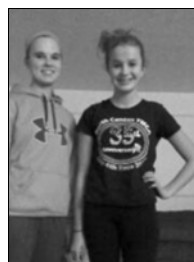
Youth and adult members enjoy singing to shut-ins, including God Loves Me Dearly - in Slovak! A pleasant childhood memory for many shut-ins.



St. John Youth Groups pray together, play together, and love to sing. A great example of church family togetherness!



Members and friends gathered for a Super Bowl party at a members home for fun, food, games and fellowship on Feb. 3rd. A good time was had by all!



HAPPENING AROUND OUR SELC DISTRICT

Rev. Carl Krueger: Milwaukee County Veterans Service Commissioner

January 18, 2013, Rev. Dr. Carl Krueger, SELC District President, was sworn into his third term of office as Milwaukee County Veterans Service Commissioner, by Milwaukee County Clerk, Joseph Czarnecki. First appointed in 2004 by the then-Milwaukee County Executive, Scott Walker, Rev.



Krueger was also chosen for appointment by the present Milwaukee County Executive, Chris Abele. Two Commissioners and a Veterans Service Officer deal with Veterans' issues and services throughout Milwaukee County. Scott Walker was elected as Wisconsin's Governor in 2010, and he then appointed Rev. Krueger as the 4th Congressional District (WI) representative to the WI State Board of Veterans Affairs, an office that Rev. Krueger also continues to hold. In both positions, Rev. Krueger was ratified by the Milwaukee County Board of Supervisors and the Wisconsin State Senate.

Rev. Dr. William Utech received the Call from Fountain of Life, Kernersville NC. Call returned.

Redeemer (Manchester NJ) Called **Rev. Philip Matarazzo** (Prince of Peace Howell NJ). Call accepted. Installation has been set for Saturday, March 2, 2013 at 3:00pm.

SELC Calendar

March

- 1** Deadline to get Vicarage and Candidate request documents into the SELC District Office
- 7,8** Great Lakes Regional Council of Presidents, Ann Arbor MI

April

- 16** Placement Committee, St. Louis MO
- 25,26** Placement Committee, Fort Wayne IN
- 27-30** Council of Presidents, Fort Wayne IN
- 29** Vicarage Assignment Service, Fort Wayne IN
- 30** Call Service, Fort Wayne IN

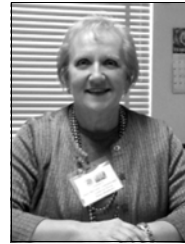
May

- 1** Call Service, St. Louis MO
- 6-8** Central Circuit Pastoral Conference, Calvary, Parma OH
- 8-10** SELC Board of Directors, Calvary, Parma OH
- 13-15** Lutheran Haven Board of Trustees, Oviedo FL
- 17-20** LCMS Convention Committees, St. Louis MO

Lutheran Haven Builds Bridges

by Linda Kirk, CEO

Lutheran Haven is delighted to introduce Janet McCloud as the new Administrator of the



Lutheran Haven Home Healthcare organization. Janet is a long time resident of the Central Florida area, an experienced home care professional, and a member of St. Luke's Lutheran Church in Oviedo.

Lutheran Haven Home Healthcare is an option that the Haven has provided for individuals requiring in-home nursing and therapy services since 2007. With a full range of nursing services, as well as physical, occupational and speech therapies, LHHH provides services through a Medicare certified program. Recently, LHHH has expanded its service to VA Aid and Attendance recipients living at home, and to subscribers of other private insurances.

In addition to the skilled services described above, LHHH provides in-home personal care and companion programs. These services include assistance with personal care, such as bathing and dressing, light housekeeping and laundry, transportation to doctor's appointments or to the grocery store, and the like.

The home care staff members serve not only Haven residents, but residents in the greater Seminole, Orange and Osceola counties as well. Bridging services to the surrounding community is another way for Lutheran Haven to care for those in need.



There is the story of a pastor who got up one Sunday and announced to his congregation:

I have good news and bad news!

The good news is, we have enough money to pay for our new building program.

The bad news is, it's still out there in your pockets.

NEWS FROM THE LC-MS

Seminary Announces Coloring Contest

ST. LOUIS—Concordia Seminary is announcing its first coloring contest for kids across the nation: the Picture-Your-Pastor Contest. Any child in grades K-8 and involved in an LCMS congregation can participate.

The Picture-Your-Pastor Contest asks kids to let us know what makes their pastor wonderful—in their own drawings and words. We're hoping to get people in congregations thinking about (and praising God for) all the wonderful ways pastors touch their lives.

How to enter:

1. Get a piece of paper (8.5×11") and some crayons, markers, colored pencils, or pens.
2. Somewhere on the paper, write one sentence about what makes your pastor great.
3. On the same side of the paper, draw a picture of your pastor in action, doing whatever you wrote about.
4. Write your name and age on the back of the drawing.
5. Mail it in. Mail your Picture-Your-Pastor picture and completed Entry Form to: Concordia Seminary, Picture Your Pastor Contest, 801 Seminary Pl., St. Louis, MO 63105 by **April 1, 2013**.

Winners will be announced around Call Day (May 1), published in Concordia Seminary magazine and on the website, and on display at the LCMS Synodical Convention in July 2013. Five young artists from each grade (45 in total) will be selected for special recognition and prizes.

Read all about it on our website: <http://www.csl.edu/picture>.

St. Louis-Concordia together with Peace Officer Ministries will host "**Christian Law Enforcement Chaplancy-Theology and Practice**" on May 20-24.

The workshop offers unique accredited training for chaplains, peace officers, and pastors, focusing on effective Christian ministry to and through law enforcement. Deadline for registration is **May 6**. For information and registration, visit the Seminary's website at www.csl.edu or email them at ce@csl.edu.

Lutherhostel '13 Set for October

ST. LOUIS—LutherHostel 2013 will be held Oct. 5-8 on the campus of Concordia Seminary, St. Louis. LutherHostel is an event designed to provide growth in biblical knowledge and understanding, fun, and fellowship, and a chance to gain helpful insights for daily living. It is offered for adults age 55 and older.

The theme for the event is "Joyfully Aging." The main presenter will be Dr. Richard Bimler. Bimler's most recent book, *Celebrating God's Gift of Aging*, was published in summer 2012 by Concordia Publishing House.

For more information about LutherHostel, contact the Seminary's office of continuing education and parish services at 314-505-7286 or ce@csl.edu.

FORT WAYNE, IN (CTS)—An **alumni reunion** will be hosted by Concordia Theological Seminary, May 16-17, 2013, for the classes of 1953, 1958, 1963, 1973, 1983, 1988, 1993 and 2003. A schedule of the reunion events and online registration can be found at www.ctsfw.edu/Alumni. Those interested may email Alumni@ctsfw.edu or phone 260-452-2260.

iPray

A Simple Prayer Book for Ministry,
Mercy and Multiplication
By James D. Buckman

I have been so blessed to see the Holy Spirit work through believers as they developed their church's Prayer Ministry and planted House Churches in their communities. This book is meant to serve as a practical manual, in it you will find actual examples of our churches using Prayer to reach out and better serve their neighbors; as well as actual examples of planting House Churches in various settings. Throughout the book you will find "Discipleship Questions" with space provided for the reader to reflect and write down their ideas. It is my hope to provide a resource that you can tailor to your specific setting.

If you would like to get a copy of the book; it is available at our web site.

www.HouseChurchPlanter.com.

ST. LUKE'S CONCERT SERIES 2012-13 *presents*

Light and Dark

Sunday Afternoon

March 17, 2013

3:00 pm ~ FREE ADMISSION

Reception following concert

Lutheran Cantata Choir and Chamber Ensemble

Justin Chase, Director

Program Highlights

Bach's Cantata No. 6

Bleib bei uns, denn es will Abend werden
(Stay With Us, For Evening Falls)

Morning Has Broken

Christus Paradox

Sure on this Shining Night

You Are the Light of the World
(from "Godspell")

*An inspirational collection of
sacred choral repertoire...
traditional and contemporary.*



Courtesy: Oviedo Photo Club

ST. LUKE'S CONCERT SERIES: A gift to the community from

ST. LUKE'S LUTHERAN CHURCH ~ 2021 W. SR 426, Oviedo, FL 32765

For more info: 407-365-3408 ~ stlukes-oviedo.org/concert-series

St. Luke's Concert Series 2012-13 is made possible by the generous donations of individuals, as well as support provided by Seminole Cultural Arts, Inc.

