



WWW.SELC.LCMS.ORG

The Lutheran Beacon

Let your light shine . . .



PUBLISHED BY THE SELC DISTRICT OF THE LUTHERAN CHURCH - MISSOURI SYNOD

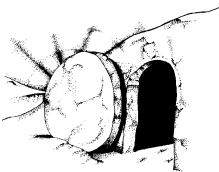
APRIL 2010

He was born . . .



. . . He died
on the cross

. . . He rose from
the dead



. . . So
that we
might live!

A blessed Easter
to you all!

As Parish Nurse @ St. Stephen's LC (Dickson City PA), I have had the privilege for the past 3 years to minister to our congregants with various health issues; be it taking them for a medical procedure/office visit, home visitations, or consulting with them about their medications. Most times after a visit I feel that I am the one being served as they offer me spiritual and emotional encouragement.

*As a Parish Nurse, mother, "nana" and the widow of a tissue donor, I have zeal to encourage and promote public awareness for the critical need for organ and tissue donors. As an active volunteer with **The Gift of Life** donor program, I've had the great honor to tell the story of my late husband's donation to many groups.*

Because I have the audience's attention, I've found this a wonderful opportunity to be a witness of the love of God through Christ Jesus. My husband was a teacher, a lay minister, Sunday school/youth group leader. His motto for the youth group was the acronym J.O.Y. He told them to always put Jesus first, Others second, and Yourself last. So with the help of God as I tell my story of Organ/ tissue donation to various groups, I also share with them how the love of God has sustained me for all the years after my husband's sudden death in 1996 at the age of fifty-one.

April is National Donate life month and I have included some information for our readers to consider. [SEE PAGE 3] It is my prayer that many will say YES to organ donation thereby alleviating much pain and suffering and giving many a second chance with a new life.

Frederick Buecher is quoted as saying: "The life I touch for good or ill will touch another life, and that in turn another, until who knows where the trembling stops or in what far place my touch will be felt."

All God's blessings,

*Marcia Rudat RN Parish Nurse
St. Stephen's Lutheran Church
Dickson City, Pa*

SEE THE LUTHERAN BEACON IN FULL COLOR AT WWW.SELC.LCMS.ORG

SYNOD - DISTRICT FINANCES

by Rev. Thomas Soltis, SELC District Stewardship Director

LCMS SYNODICAL BUDGET

Fiscal Year 7/1/09 - 6/30/10

Program Boards	\$59,113,686
KFUO Radio	3,591,666
Veterans of the Cross	462,675
Ecclesiastical Services & Commissions	2,957,646
Synodical Officers & Administration	3,333,369
General Administrative	18,827,454
Interest	227,500
Net adjustment	(7,110,618)
	\$ 81,403,378

Synodical Budget Comparison

2008-09	\$84,690,924
2009-10	<u>81,403,378</u>
	\$ 3,287,546 (-3.8%)

SELC DISTRICT 2010 BUDGET

LCMS Synodical Missions/Ministries	\$204,000
Support of Two Seminaries	22,000
Lutheran Haven	62,000
SELC Missions	155,500
SELC Services	240,000
SELC Ministries/Programs	63,500
	\$747,000

District Budget Comparison

2009	\$768,100
2010	<u>747,000</u>
	\$ 21,100 (-2.7%)

2010 SELC RECEIPTS & DEFICIT

Congregational Budget Remittances	\$513,000
Non-budget Receipts	7,000
Interest	20,000
Ablaze/Fan into Flame Projects	8,500
2010 Synodical Convention	<u>4,000</u>

Projected Total Receipts \$552,500

2010 SELC District Budget \$747,000

2010 Projected Receipts 552,500

Projected 2010 Deficit \$194,500

The projected deficit will be met from a 12/31/09 treasury balance of **\$994,211**.

2010 SELC CONGREGATIONAL GOALS

Due to the economic downturn, only a 1% increase was suggested for 2010 in comparison to a 5.6% increase suggested in 2009.

2009 suggested goals	\$601,562
2010 suggested goals	<u>570,075</u>
	\$ 31,487 (-5.2%)

Goal Performance (2/1/10)

4 ... above 1%	
7 ... +1%	
5 ... same	11 decreases \$21,140
11 ... decreased	11 increases <u>3,536</u>
<u>25</u> ... unreported	Negative \$17,604
52 ... congregations	

2009 Average per Communicant - \$40.16

AN EFFECTIVE WAY TO INCREASE OVERALL CONGREGATIONAL GIVING

Six week "Consecrated Stewards" or "Consecration Sunday" stewardship programs are an effective way to increase congregational member giving. Recent increases in annual giving include: St. Matthew, Wilkes Barre, PA, +\$24,579; St. Lucas, St. Louis, MO, + \$37,000; St. John, Cudahy, WI, + \$64,843; Ascension, No. Olmsted, OH, +\$18,850; Holy Cross, Cleveland, OH, +\$13,150.

Contact SELC trained leaders for information: Rev. Warren Huffines (Western Circuit) 1-618-604-3779; Rev. Thomas Soltis (Central Circuit) 1-440-582-6140; Rev. Joseph Weatherell (Eastern Circuit) 1-732-429-7090; SELC Stewardship Department (tomas1231@sbcglobal.net)

THE CHURCH IN TIMES OF ECONOMIC DOWNTURN

The Great Recession has triggered economic uncertainty and cautious spending. Giving for church purposes has been affected as well. Congregational members, however, should remember that, whatever the economic climate, the three Biblical principles of **Proportionate, Regular, First-fruit Giving** still apply. If a Christian is receiving less, God still expects a percentage of the reduced income. Some members, not adversely affected, actually may be in a position to increase their percentage of giving – and they should – if their giving is well below the tithe (10% of income). LCMS President Gerald Kieschnik recently spoke of "purse strings" being tightened throughout the Church. He reported:

Church workers are leaving and losing their positions in ministry due to dwindling congregational offerings, while, at the same time, the mission fields that lie before us have never been riper. We still have a mission to accomplish - to make disciples for Our Lord and Savior, Jesus Christ. In times of economic crisis, many are pursuing information regarding personal money management. The stewardship page in our SELC District website (www.selc.lcms.org) has articles on the subject.

About Gift of Life

by Marcia Rudat RN, Parish Nurse, St. Stephen's LC - Dickson City, PA

Since 1974 Gift of Life Donor Program has coordinated more organ donations than any other program in the United States. Since 1974 Gift Of life has served as a link between donors, and patients awaiting life saving transplants, coordinating over 25,000 vital organ transplants, 500,000 tissue transplants. Gift of Life is the primary source of information regarding all aspects of organ and tissue donation and transplantation for approx. 10 MILLION people and 151 hospitals in eastern Pa. southern New Jersey and Delaware.

In addition to their clinical activities, Gift of Life devotes significant resources to raising awareness and understanding on the donation process. It offers programs in schools and to church, civic and business groups.

Donation is one of the highest expressions of compassion and generosity we can offer to another human being.

Question; ***If you or some one you loved dearly needed an organ or tissue to live, WHO would donate?*** Please keep that question in mind as I continue. . .

1. Currently there are over 90,000 men , women and children waiting for life saving organs, here in PA over 6,650 people await transplants.
2. Eighteen people die every day due to lack of available organs.
3. One donor can help up to 50 people by donating organs/ tissues.
4. Donation can help a family find something positive in the loss of a loved one.

Who can be a donor??

1. Anyone: from birth to age 65 and older. The medical team will determine at the time of death.
2. If you are under 18 parental or guardian consent is required. My late husband, David, donated tissues and corneas in 1996. I received a letter that said because of his donation of corneas, that two people now have the precious gift of sight.) So you see transplantation is about HOPE... and hundreds, if not thousands of people each year are given this special gift by families they will never know. YOU can be that family.

How do I become a donor?

- There are two easy steps:
1. Check yes for organ/tissue donation on your driver's license card or photo I.D.or go to www.donatelife-pa.org and sign up on line.
 2. Complete, sign and carry your donor card) after you have done either of these two things it is very important to tell your family of your decision.

What organs can be donated?

1. Life saving organs is: heart, kidneys, lungs, liver, pancreas, intestines.
2. Tissues are; bone, ligaments and tendons needed to repair injured or diseased joints or bone, Corneas, heart valves and skin for burned victims.

How are donated organs allocated?

By match with donor, medical urgency, and amount of time on waiting list. A persons age, gender, race, ethnic origin or wealth do not affect who receives available organs.

Will age or health problems disqualify me? NO, everyone should consider themselves a potential donor. MEDICAL TEAM WILL DECIDE.

SO the question still is if you or someone you loved dearly needed an organ transplant to live, who would donate???

Some people who have had transplants are.... Mickey Mantle. The late PA Governor Robert P Casey, George Lopez the actor, Mandy Patinkin who does the Crestor commercial had a corneal transplant.

Permit me to read, if you will, from the book of Matthew Chapter 25, vs. 34 and following. *then shall the King say to them on his right hand, come ye blessed of my Father, inherit the kingdom prepared for you from the foundation of the world. For I was hungry and you fed me, I was thirsty and you gave me a drink, I was a stranger and you took me in, naked and you clothed me, I was sick and you visited me; I was in prison and you came to me. Then shall the righteous say to him "Lord when did we see thee a stranger and took thee in or naked and clothed thee? When did we see thee in prison and visited thee? And the King shall say unto them..."verily I say unto you. In as much as you have done it to the least of these my brethren you have done it unto me!!*

If you or someone you loved dearly needed an organ to live, who would donate?

May God richly bless you in making your decision

Happening Around the SELC District

Call:

Rev. Dr. Joel Elowsky has accepted the Call to join the theological faculty of Concordia University, Mequon WI. He will continue to lead the African Early Christian Church Fathers' Commentary on Scripture. An installation of the Concordia WI faculty is tentatively set for August 1, 2010.

SELC Congregation requesting Placement of a Seminary Graduate/Candidate:

Holy Cross, Lake Mary FL

SELC Congregation Calling from the "field":

St. John, Granite City IL

SELC Congregations requesting Vicars:

St. Luke's, Oviedo FL

Zion, Clark NJ

St. Mark, Steubenville OH / St. John, Massillon OH

St. John, Hazleton PA

Closure:

Family of Christ Lutheran Church, Massillon OH (Jackson Township) has closed as of February 28, 2010. The Lutheran Church Extension Fund has taken ownership of the property.

The child day care continues under new ownership/management.

Mark your calendars!

Concordia Seminary, St. Louis MO

April 27, Vicar Assignment Service

April 27, Graduate / Candidate Call Service

Concordia Seminary, Fort Wayne IN

April 27, Vicar Assignment Service

April 28, Graduate / Candidate Call Service

Eastern Circuit Pastoral Conference

May 3-5, St. John, Emporia VA

Lutheran Haven Board of Trustees

May 6-7, Oviedo FL

SELC District LWML Convention

May 14-16, Concordia University Chicago (River Forest) IL, hosted by Zion, Norridge IL

SELC District Mission Board

May 17, Zion, Norridge IL

SELC Board of Directors

May 18-19, Zion, Norridge IL

LCMS National Convention Floor Committee meetings:

May 21-24, St. Louis MO

SELC Luther League Convention

July 9-11, St. Lucas, St. Louis MO

LCMS National Convention

July 9-17, Houston TX

Everybody has a (meat)ball at St. Paul's Annual Spaghetti Supper . . . by Laura Dianis

More than 145 hungry mouths managed to eat 525 of Joann Fuss' homemade meatballs, 28 pounds of Bea Walko's spaghetti and a vat of Sandy Grant's special tomato sauce at the annual St. Paul Lutheran Church



(Greenwich, CT) spaghetti supper. The event originated 33 years ago as a fundraiser to help congregation members in need, but for the past two years, it has raised funds for the church's technology and facility upgrade.

"The event just keeps growing, and we look forward to it every year," said dinner chairman Gene Bliska, who has organized the event since its

inception, and has been the church's organist and choir director for more than 55 years. "In November, we're already getting calls: 'Is it still on the last Saturday in January?' Even when we had a blizzard one year, 37 people still came out to support the church."

So, if the past(a) is any indication, when the last Saturday in January rolls around – you can guarantee there will be the St. Paul church's annual spaghetti supper.



LtoR: Cooks-Terry Harrington, Marion Kochka, Rosemarie Nassr, Bea Walko



LtoR: Volunteers Gene Bliska, Laura Dianis, Myrna Marsh, Jack Dobrucky, Maryann Mortenson, Laura O'Connor

In memory of . . .



CAROLYN J. SOLTIS

On Feb. 10, 2010, at the age of 76, Carolyn Johanna Soltis, wife of Rev. Thomas Soltis, departed from this life to be with her Lord forever. Interment took place at Maple Hill Cemetery, Wilkes Barre, PA, on Feb. 15. Rev. Gary Scharrer of St. Matthew LC conducted the service.

A Memorial Service took place on Feb. 18 at Holy Trinity LC, Parma, OH. Rev. John Milligan conducted the service, assisted by SELC District President, Rev. Dr. Carl Krueger. Carolyn was born on April 22, 1933, in Caro, MI, the daughter of Rev. Alfred W. and Emma M. (Salomon) Trinklein. She was baptized in Caro, MI, on May 7, 1933 and confirmed on May 25, 1947, at St. Matthew LC, New York City, where she also was joined in marriage to Rev. Thomas Soltis on July 21, 1956. They were blessed with two children, Gregory and Gretchen.

Carolyn attended Concordia College, Bronxville, NY, and Concordia Teachers College, River Forest, IL, to become a Lutheran school teacher. She taught at Lutheran schools in Mineola, NY, and Elyria, OH. She also served her Lord as organist, choir director and church secretary. With her husband, Thomas, she served three SELC District congregations: Sts. Peter & Paul, Lorain, OH; Holy Trinity, Yonkers, NY; Holy Trinity, Parma, OH.

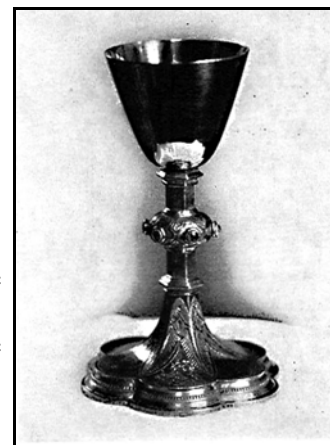
She is survived by her husband; a son, Gregory; a daughter, Gretchen Marlette and husband, Kenneth; a grandson, Walter; two sisters, Sylvia Mendelman & Judith Cunningham. A brother, Rev. Michael Trinklein, and a sister, Mary Lou Dinkel, preceded her in death.

AN SELC MYSTERY

By Rev. George D. Plvan

The founding of the Slovak Evangelical Lutheran Church, now the SELC District of the LC-MS, took place at a meeting held from September 2-4, 1902 at St. Peter LC, in Connellsville, PA. Ten pastors and four laymen were present. Rev. D. Z. Laucek was elected the first president of the new church body.

In 1904, when Rev. Laucek celebrated the thirtieth anniversary of his ordination, he was presented with a chalice by his brethren in office. President Laucek in turn presented the chalice as his gift to the church.

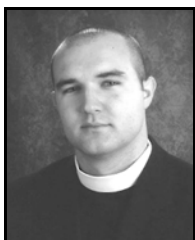


Have you seen me?

According to information passed on by word of mouth this chalice was used at conventions of the SELC for a number of years. Then, for no reason that can be determined, it ceased to be used and it disappeared from the scene.

As the present time no one seems to know what happened to this chalice or where it might be.

If anyone knows anything about this chalice or its whereabouts they are invited to contact our SELC District archivists, Rev. Donald Hayas and Ruth Janosik rj2002dh@juno.com or Rev. George D. Plvan gdp1vn@verizon.net.



A warm welcome to our newest SELC Pastor . . .

Seminarian Jacob Gaugert received the Call from Evangelical Lutheran Church of Dr. Martin Luther (Chicago), at the CTS-Ft. Wayne Call service in February.

He was born and raised in Sullivan WI (pop.611) where his family held membership at St. John's LC for generations. Baptized and confirmed at St. John's, he also served as a Sunday school teacher and Christmas pageant director while still in high school.

After graduating from Concordia University in Mequon, WI (majoring in Biblical and Classical Languages), he began seminary studies at CTS, Ft. Wayne, which included fieldwork at Trinity LC/Iglesia Luterana Santisima Trinidad.

From October 2006 til July 2007, he studied as an exchange student at the Lutherische Theologische Hochschule (the seminary of the LCMS sister church in Germany) in Oberursel Germany. On his return to the states, he was assigned to his American vicarage at Trinity LC in Norman, OK.

Pastor-Elect Gaugert's ordination and installation will take place on April 17th.

Being "Comfortable" and "Comforting": Is It Possible for Us Christians to Be Both?

by Pastor Ken Ballas, Em.

"Comfort, comfort, my people, says your God!" (Isaiah 40:1). "Fear," "love," "trust," "honor," "respect," and, yes, "comfort" – these all happen to be examples of English words that can be used as verbs as well as nouns.

The phrase "*comfort level*" has become increasingly popular in our language. Surely there is nothing wrong with wanting to be at least modestly "*comfortable*" as individuals or families for whom most of us would do most anything to love and protect. So why even suggest a possible distinction between being comfortable and comforting?

Consider the close juxtaposition between these two concepts or attitudes on the part of our Lord Jesus on His [yes, our!] Cross? Our Brother-Savior is obviously anything but "*comfortable*" in the days and hours leading up to His self-imposed crucifixion. Yet He finds it possible to comfort or be comforting to His executioners, His grieving mother, student-disciple John and each of us on that memorable Friday that men call "Good."

When is the last time any of us thought or said, "I am not particularly *comfortable* doing such or so?" Especially for us believers there are certain things in life that make all of us feel *uncomfortable*. Whenever, however, we use our own particular "*comfort level*" as a precondition or excuse for avoiding wholeheartedly engaging ourselves in doing what God obviously wants all His redeemed people to be doing in relating to other people for whom His Son also lived and died and rose again, then we have a real "sin problem."

The biblical word "*comforter*" is not only a common designation for God the Holy Spirit (see John 14-16) but also is used as reference to our Lord Jesus

in 1 John 2:2! The word group from which we derive the word "Paraclete" is variously translated as "Advocate," "Counselor," "Helper," or "Encourager." Hearing a swim team coach literally shouting *from the sidelines* an encouraging "Go!" "Go!" to a nearly exhausted athlete swimming the breaststroke each time his or her ears break the surface of the water appropriately also suggests ours thinking of our "*parakletic*" God as "*Coach!*" With two persons of the Trinity ever interceding for us to our Heavenly Father to forgive us those times in our daily walk with our Lord when we were more concerned about being "*comfortable*" than comforting — with so much going for us, we can read and take to heart these opening verses from 2 Corinthians 1 in a new and life-changing light:

Blessed be the God and Father of our Lord Jesus Christ, the Father of compassion and the God of all comfort. He comforts us in all our troubles, so that we can comfort others in any trouble with the comfort we ourselves have received from God. For just as the sufferings of Christ flow over into our lives, so also through Christ our comfort overflows. If we are distressed, it is for your comfort and salvation; if we are comforted, it is for your comfort, which produces in you patient endurance of the same sufferings we suffer. Our hope for you is firm, because we know that as you share in our sufferings, so also you share in our comfort

(2 Corinthians 1:3-7)

Comfortable or Comforting? Because of Jesus, Ultimately, Both as His Joy and Peace Are Given to Each of Us to Share with Others!

This is your newsletter . . . Articles & Photos are welcome! Send submissions to:

The Lutheran Beacon

c/o Gail Peterson:

1210 Ambra Dr. – Viera, FL 32940-6755

email: gailmail37-beacon@yahoo.com

Questions? 321-752-5519 or 954-401-8452

Deadline is the 12th of each month

Please submit articles as separate attachments in whatever program you write in. [e.g. Word Perfect, Word, etc. - NOT as emails]

Photos must be submitted as separate attachments [preferably .jpg format and NOT as part of your article].

When sent by snail mail, photos must be received by the 6th of the month. If you want them returned, attach a note and send a self-addressed stamped envelope.

The JOY of Skiing! by Tim Hasko, President SELC Luther League

Under the theme **Be Joyful Always** [based on 1 Thessalonians 5:16-18], 67 people from six different congregations and Concordia University WI met in snowy Wisconsin for the annual SELC Western Circuit Ski Trip. Some youth skied, some snowboarded, some opted for the tubing hill, and still others preferred the "nachos and hot chocolate" version of skiing.



Our CUW YMIN team consisting of Jenna, Russell, Gary (from Oviedo), Scott, Kyle, Nicole, Ashlee, Micah, and Alissa introduced us to some interesting "Get-to-Know-You" games, including the longest one in Luther League history!



After six hours of night skiing, the youth returned to Racine for closing devotions, Kangaroo Court, and a lock-in. We had to add a new category of Kangaroo Court fines this year, for all of the youth involved in excessive texting, and for all youth making up fines against Carl from St. Louis. Other noteworthy fines included those youth who made it down the ski hill without actually skiing.

The rest of the night was spent playing ping pong, watching movies, playing board games, hanging out, and apparently having a carrot fight as evidenced by the cleaning crew in the morning. After an inspiring worship service Sunday morning ending with Luther League favorite hymn "God Be With You", the CUW team sent us on our way with a closing devotion.

We are looking forward to seeing everyone again the District Luther League Youth Gathering July 8 – 11 at Camp Wartburg in Waterloo, IL, hosted by the St. Lucas, St. Louis group!



SELC Luther League Eastern Circuit Retreat and Convention Update

by Pastor John Perling

February 12-14, 2010

YMCA CAMP BERNIE

Port Murray, New Jersey



Churches who sent delegates:

St. Paul Evangelical LC, Greenwich CT

Holy Trinity LC, Garfield, NJ

Zion LC, Clark, NJ

Redeemer LC, Manchester, NJ

Peace LC, Galloway, NJ

Guest Congregation: Peace LC, Scranton, PA

Luther League Eastern Circuit Officers:

President **Michelle Palmer**, St. Paul, Greenwich

Vice-President **Eric Dimauro**, Peace, Galloway

Secretary **Chelsea Almeyda**, Peace, Galloway

Treasurer **Joe Frost**, Zion, Clark

Pastoral Adviser **Pastor John Perling**, St. Paul, Greenwich

Total Participants: 57

38 High School and Middle School Youth

15 Adults Counselors

2 Elementary

2 Pre-School

\$310 was raised to be split evenly between the Luther League Scholarship fund and the Luther League Mission Fund

News From the Haven

by Donald Kovac, Executive Director

Haitian Earthquake Response Update
Meetings with Lutheran Haven's Haitian employees continues, as ways to help their families back home are discussed. Most of the families, some whose homes are still intact, are still frightened to sleep inside; most are sleeping in shelters outside their homes. To date, \$5,700 is available for assisting our employees' families which includes \$2,500 from the Haven Board of Trustees and \$3,200 from Haven residents. Lutheran Haven is also a member of Lutheran Disaster Response in Florida. The Haven hosted a meeting with LDR in early March where a briefing was given on the Lutheran church's response to Haitian disaster.

Guest Cottage Program Response
The response to our new Guest Cottage program has been great, says Debbie Pulliam, Haven receptionist responsible for reservations. *I'm getting a lot of calls and my book is filling up fast!* Under the program, guests can now stay up to six months. Eight, one and two fully furnished cottages have been put into service for this program. Guests can stay for just a night or now, up to six months. For reservations call Debbie at (407) 365-5676.



Human Care

by Nona Schipull
SELC District Human Care Chairman

Since the powerful earthquake caused massive devastation in Haiti, many people have made donations of money, water, food, and other types of supplies for the Haitian people. Lutheran Church Charities in Addison, Illinois, has shipped containers of donated goods to Haiti. Now they are sharing fund raising ideas.

One interesting project is the "water battle collection." St. Paul Lutheran School, Norwood Park, IL, used the necessity of water as a springboard for fund raising. Students were given a bottle of water. After they drank the water, they were to begin filling the bottle with coins to be used to provide water and other supplies for Haiti.

Jesus tells us in Matthew 25:35, *I was hungry and you gave me food, I was thirsty and you gave me drink.* We serve and obey Jesus when we give to our brothers and sisters in Haiti. For more ideas, or to share your fund raising ideas go to their website, www.LutheranChurchCharities.org.

The 2010 SELC LWML District Convention will be held at Zion LC (Norridge IL) and Concordia University Chicago (River Forest IL) May 14-16, 2010. More information is being sent to each society as well as complete registration documents.

NEWS FLASH . . . JUST RECEIVED FROM Rev. Gregory Walton, President of the Florida-Georgia District, LCMS!

My dear brothers and sisters in Christ,

Lenten greetings to you all as we begin those final weeks of this season that truly points us to the hope we have within us, the risen Lord Jesus! The Psalmist wrote, "Precious in the sight of the Lord is the death of His saints." Psalm 116:15

We have learned of the murder of Pastor Doris Jean Louis, the father of Lutheranism in Haiti, truly one of God's saints. Apparently as he was entering his residence on

Friday, March 12th, he was attacked by some men and brutally murdered ... no further details at this time.



The needs in Haiti continue to be great, and if your congregation is able, please continue to raise support for these brothers and sisters in Christ. You can direct those gifts through the District Office or through Mission Haiti in Davie, FL. But most importantly, let us keep the family and friends of Pastor Doris Jean Louis in our prayers, that the legacy of his life might continue to loudly proclaim the Gospel he loved about our Savior, Jesus Christ!

Happening Around the LC-MS

Lutheran Heritage Foundation (LHF) *Do you serve, or would you like to serve, Spanish-speaking people in your community, with the Gospel? Or, are you planning a mission trip to Central or South America?* If so, the Lutheran Heritage Foundation has a free resource that will soon be available to you: the Spanish edition of the Holy Bible, bound with Luther's Small Catechism.

To pre-order copies, visit the LHF website at www.LHFmissions.org/Spanish_Bible_Poll where you can also take a poll to help LHF decide how many copies of the Bible/catechism to print, in what version, in hardcover or soft cover. LHF's materials are provided at no charge.

Ft. Wayne (CTS)

April 13: Election of officers and prep of auction baskets for Lutherfest; 1:00 pm in Luther Hall.

Also, save the date for the **Fifth Annual Lutherfest on April 16, 2010**. As always, Lutherfest will be a fun evening of entertainment and great food. The event also serves as the Guild's annual fundraiser for their project for seminary students. This year the group is working to replace all the washers and dryers in the student dorms and allow the machines to be used at no charge. What a blessing that will be for students!

For additional information concerning educational opportunities and events at CTS, please contact: Jayne Sheafer, CTS Director of Public Relations, 260-452-2250 or PublicRelations@ctsfw.edu.

ST. LOUIS (CTS): The Office of Admissions and Ministerial Recruitment at CTS announces a clarification of the March 31 application deadline. Applicants may apply for the 2010-2011 Academic Year until June 30, 2010. This reinterpretation has not superseded the March 31 deadline. The March 31 deadline still applies and is the preferred deadline for applicants to follow; and March 31 is the only deadline which will offer an applicant the best opportunity for financial aid and on-campus married housing.

For details regarding this interpretation, please consult the Concordia Seminary Web site, www.csl.edu, and go to "Admissions." Contact the Office of Admissions and Ministerial Recruitment at 800-822-9545, or admissions@csl.edu for questions.

ST. LOUIS (CTS), together with Peace Officer Ministries, Inc. (POM), will host "Christian Law Enforcement Chaplaincy—Theology and Practice," on May 24-28 on the Seminary campus. The workshop offers unique accredited training for chaplains, peace officers, and pastors, focusing on effective Christian ministry to and through law enforcement.

Registration cost is \$340. This includes four breakfasts, five lunches and three dinners, plus CEUs for full participation. Limited on-campus housing is available on a first-come basis. Housing is dormitory style with shared bathrooms and showers. Rooms are on the 2nd floor and are not handicapped accessible. Rates are \$30 per night for single or couple and \$17.50 per night for a shared room.

ST. LOUIS (CTS), will host its 8th Annual Day of Homiletical Reflection on Wednesday, May 5, from 9:00 a.m. to 4:15 p.m. in the Seminary's Clara and Spencer Werner Auditorium. The event is designed for pastors, students involved in homiletical education, and others interested in the proclamation of the Gospel in today's world. The registration fee for the Day of Homiletical Reflection is \$25.

For more information, contact the Office of Continuing Education and Parish Services at 314-505-7486, ce@csl.edu or visit the Seminary's Web site at www.csl.edu for a downloadable brochure.

WHO IS LWR? Lutheran World Relief, an international nonprofit organization, works to end poverty and injustice by empowering some of the world's most impoverished communities to help themselves. With partners in 35 countries, LWR seeks to promote sustainable development with justice and dignity by helping communities bring about change for healthy, safe and secure lives; engage in Fair Trade; promote peace and reconciliation; and respond to emergencies. LWR is headquartered in Baltimore, Md. and has worked in international development and relief since 1945. LWR is a ministry of The LCMS Synod.

Members of Lutheran World Relief's communications staff have been recognized by the Religion Communicators Council (RCC) for their work in print publication, video, graphic design, advertising, and social media.

2009-10 ST. LUKE'S CONCERT SERIES *Presents*

Orlando Philharmonic Orchestra

Saturday-April 24th -7pm



Program Highlights:

Handel: The Entrance
of the Queen of Sheba &
Concerto Grosso, Op. 4,
No. 7, Alexander's Feast

Boyce: Symphony No. 5

Purcell: Overture:
The Indian Queen

C.P.E. Bach: Symphony for
Strings No. 1 in G Major

J.S. Bach: Orchestral Suite
No. 3

Baroque: "A Pearl Of Irregular Shape"

Guest conductor:
Dr. Anthony Hose



**St. Luke's Concert Series is a gift to the community from
St. Luke's Lutheran Church**

2021 W. SR 426 (Aloma Ave.) Oviedo FL, 32765 (407-365-3408)

For more information, visit stlukes-oviedo.org (click on Concert Series logo)

St. Luke's Concert Series 2009-10 is made possible
by the generous donations of individuals,
as well as support provided by Seminole Cultural Arts Council, Inc.

